



REGISTERED  
ARCHITECT

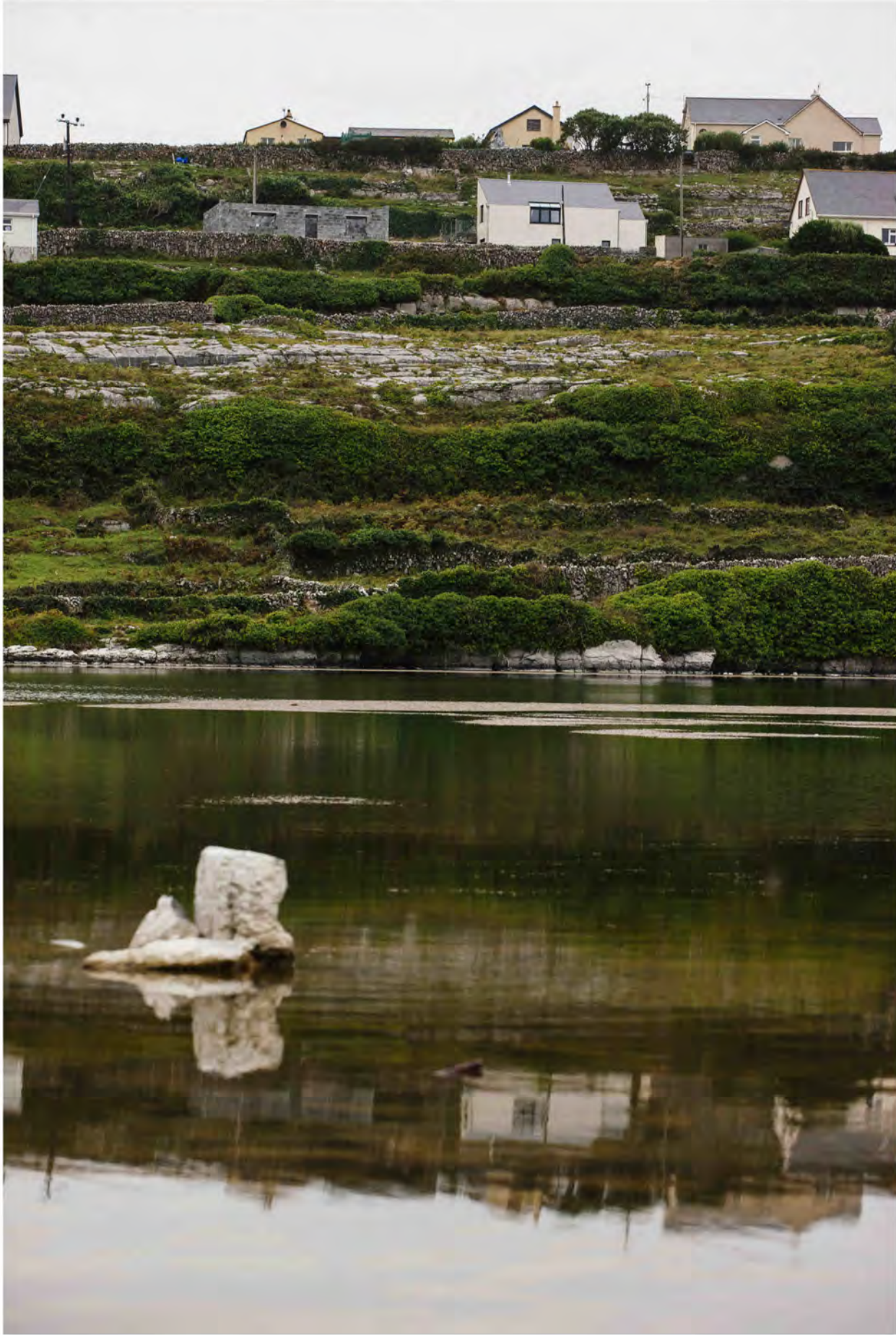
RIAI

# O'NEILL ARCHITECTURE

ARCHITECTURE | PLANNING | DESIGN

T 067 68036 M 087 7489410 W [www.oneillarchitecture.com](http://www.oneillarchitecture.com)

## Inis Oírr Dwelling, Aran Islands





# ISLAND DWELLING - INIS OIR, ARAN ISLANDS

**CONCEPT** - For this Island Dwelling we developed the designs from the simplicity of the landscape; working with the given contours, solar orientation and making reference to traditional design. The living area located on the upper level allows spectacular views of the Cliffs of Moher. It is connected to a terrace which is so orientated as to create a sun-trap and catch the sun from late morning until the last of the evening sun rays are obscured by the above lying escarpment. The views from the road are shielded by part of the house, creating the private and sheltered outdoor space. The escarpment acts as a wind break for the prevailing westerly winds ensuring great use of this outdoor terrace in most weather conditions.

## SUSTAINABILITY IN DESIGN – Working With the Land!

The house is located towards the north end of the site to place the maximum area of garden on the south side of the house which is also the direction of the finest views. The main entrance is on the lower level with the two double bedrooms. A staircase, following the slope of the hill, leads upwards to the living level containing an open-plan kitchen, dining and lounge area and third bedroom / study. Behind the main house of approx. 105 square meters, accessed via the stairs landing, is a studio space of 30sqm with its own

bathroom and private terrace. This design follows the contours of the land and at the same time creates an elevation from the north which is typical of rural traditional design. In the garden some stone walls have been re-located to allow 2 fields to be closed off and used for agricultural purposes, while the land surrounding the house can be used for domestic/ ornamental gardening purposes. The car parking is placed to the north end of the site as not to intrude on the setting of the house in this beautiful landscape.

**SUSTAINABILITY IN MATERIALS** - We are achieving a comfortable A3 provisional BER rating by constructing with monolithic clay blocks. Clay is naturally a very good material at regulating humidity, absorbing and releasing moisture readily. The clay blocks work by being 'breathable', i.e. being able to transfer moisture from inside to outside, thus eliminating the need for the cavity used in ubiquitous concrete block walls. Whilst being an ecologically sustainable product it provide excellent thermal and sound insulation, healthy living environments, long-lasting airtightness and fast construction. Given the high moisture content of the Island environment this product is ideal.

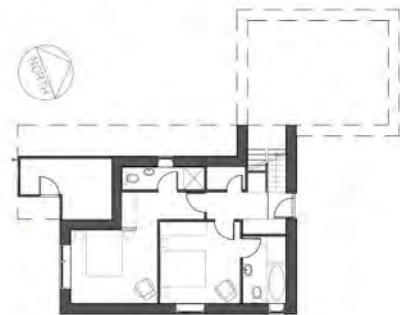
Currently on-site, completion due May 2013.



Site Plan



First Floor Plan



Ground Floor Plan